



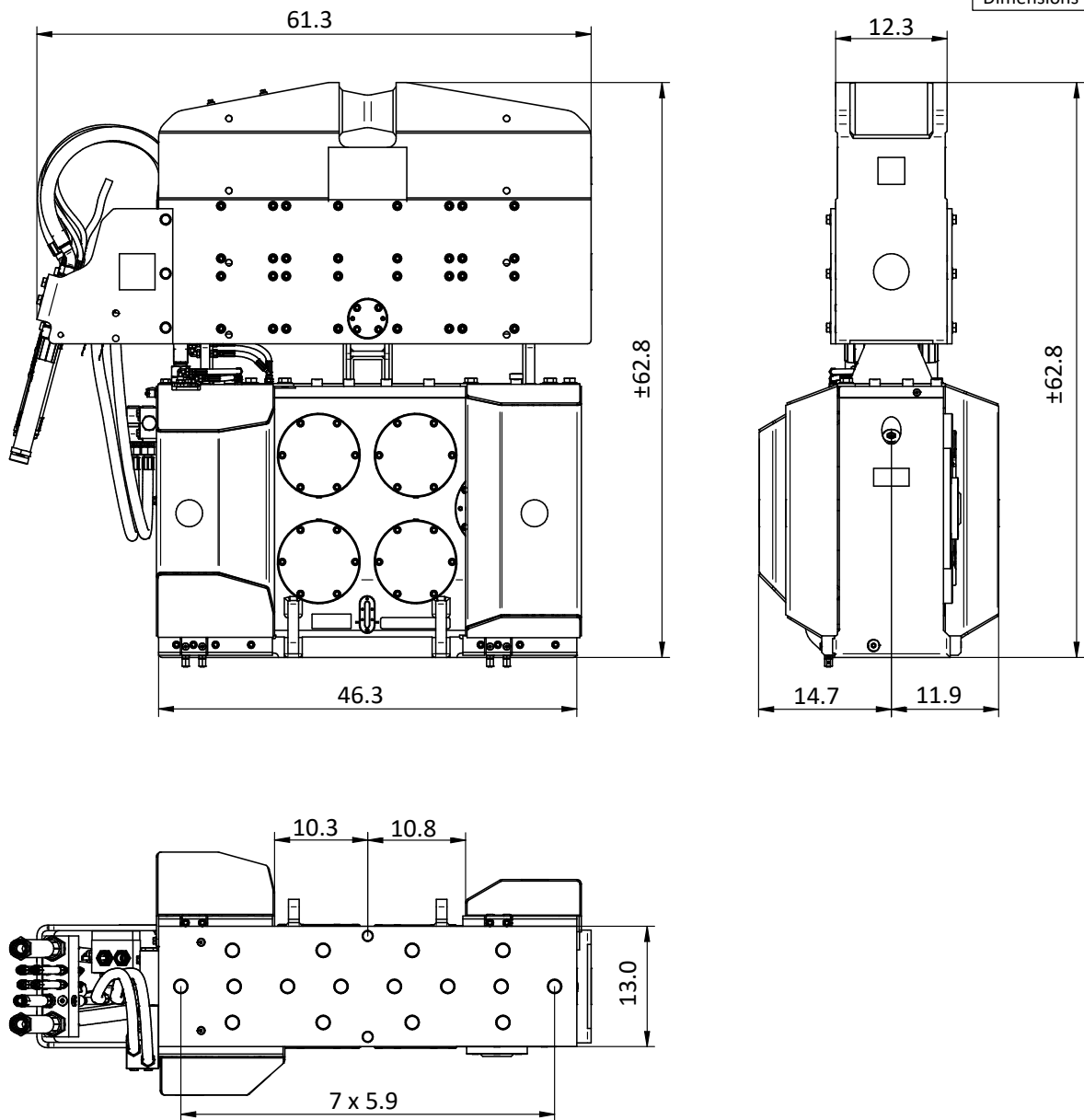
# Specifications

## PVE 12VM

Vibro Hammer

USA

Dimensions in inches



### Specifications

### PVE 12VM

|                                     |                |                            |            |
|-------------------------------------|----------------|----------------------------|------------|
| Eccentric moment                    | 0-1,042 in-lbs | <b>Clamps:</b>             |            |
| Max. centrifugal force              | 0-79 ton       | Sheet pile clamp           | 100TU      |
| Max. frequency                      | 2,300 rpm      | Transport weight per piece | 1,080 lbs  |
| Max. amplitude excluding 85TU       | 0.67 in        | Double clamps              | 55TC       |
| Max. amplitude including 85TU       | 0.49 in        | Transport weight per piece | 683 lbs    |
| Max. static line-pull               | 25 ton         |                            |            |
| Max. operating pressure             | 5,076 psi      | <b>Powerpack:</b>          |            |
| Max. oil flow                       | 69 gal/min     | Model                      | 300 series |
| Forced lubrication                  | yes            |                            |            |
| Dynamic weight excluding 85TU       | 3,197 lbs      | <b>Hose set:</b>           |            |
| Dynamic weight including 85TU       | 4,277 lbs      | Length                     | 98 ft      |
| Total weight excluding 85TU & hoses | 5,282 lbs      | Transport weight (±)       | 1,025 lbs  |