

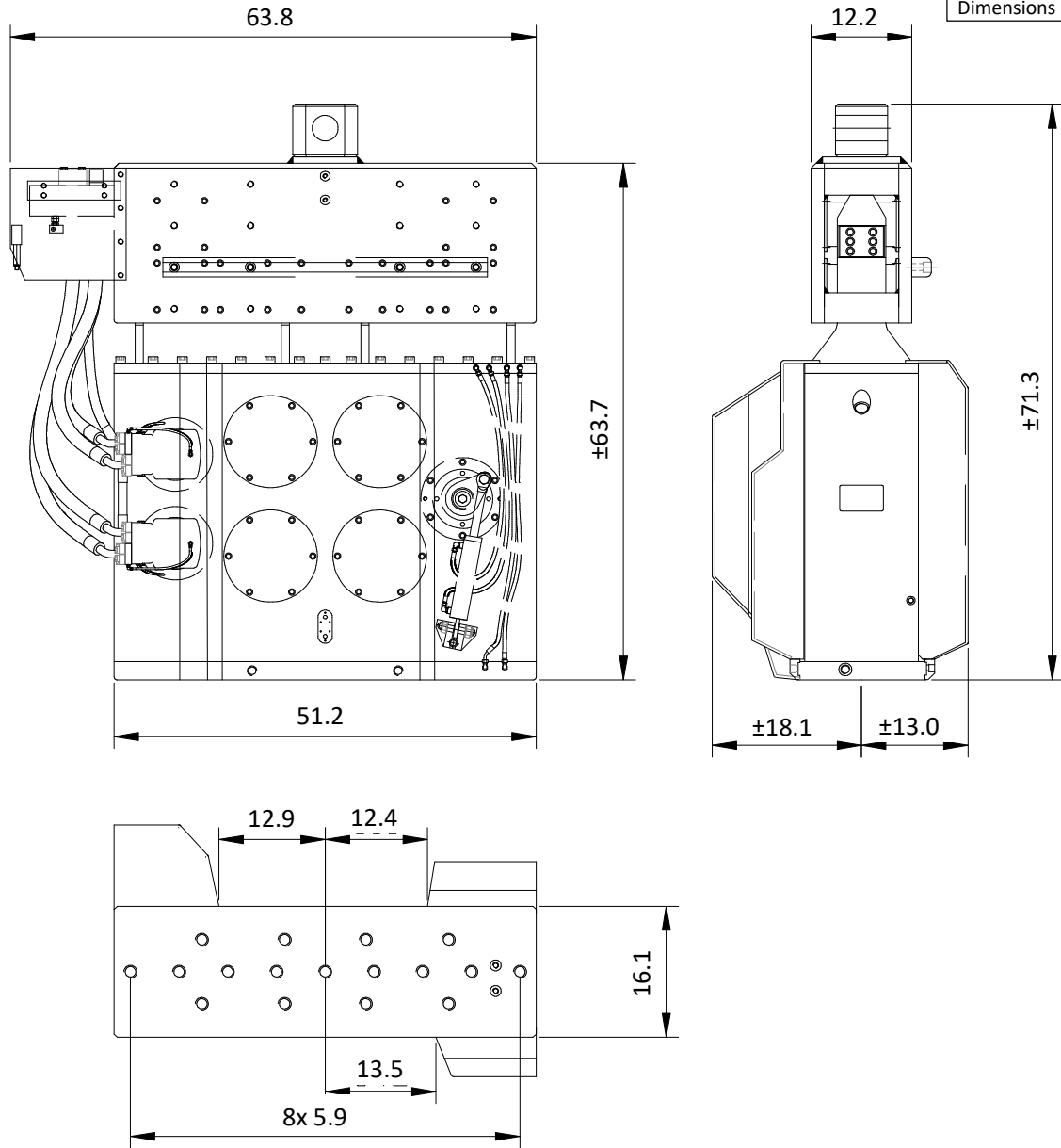


# Specifications

## PVE 23VMA

Vibro Hammer

USA



### Specifications

### PVE 23VMA

Eccentric moment	0-1,736 in-lbs	<b>Clamps:</b>	
Max. centrifugal force	0-152 ton	Sheet pile clamp	160TU
Max. frequency	2,300 rpm	Transport weight per piece	2,425 lbs
Max. amplitude excluding 150TU	0.75 in	Double clamps	80TC
Max. amplitude including 150TU	0.5 in	Transport weight per piece	1,102 lbs
Max. static line-pull	31 ton		
Max. operating pressure	5,076 psi	<b>Powerpack:</b>	
Max. oil flow	148 gal/min	Model	N/A
Forced lubrication	yes		
Dynamic weight excluding 150TU	5,181 lbs	<b>Hose set:</b>	
Dynamic weight including 150TU	7,981 lbs	Length	N/A ft
Total weight excluding 150TU & hoses	10,296 lbs	Transport weight (±)	N/A lbs